



**International Advocacy**

**HYBRID 10 WORKSHOP**

**31 August - 2 September 2022**

---



***International Interventions & Good Practices 2***



**The Grandfamilies & Kinship Support Network**

*Ana Beltran*

Director, T. A. Center on Grandfamilies & Kinship Families  
at Generations United



# **International Interventions & Good Practices: Supporting Grandfamilies/Kinship Families in the United States**

**Ana Beltran**

Director, Grandfamilies & Kinship Support Network:  
A National Technical Assistance Center

iffd Family Perspective  
**September 1, 2022**

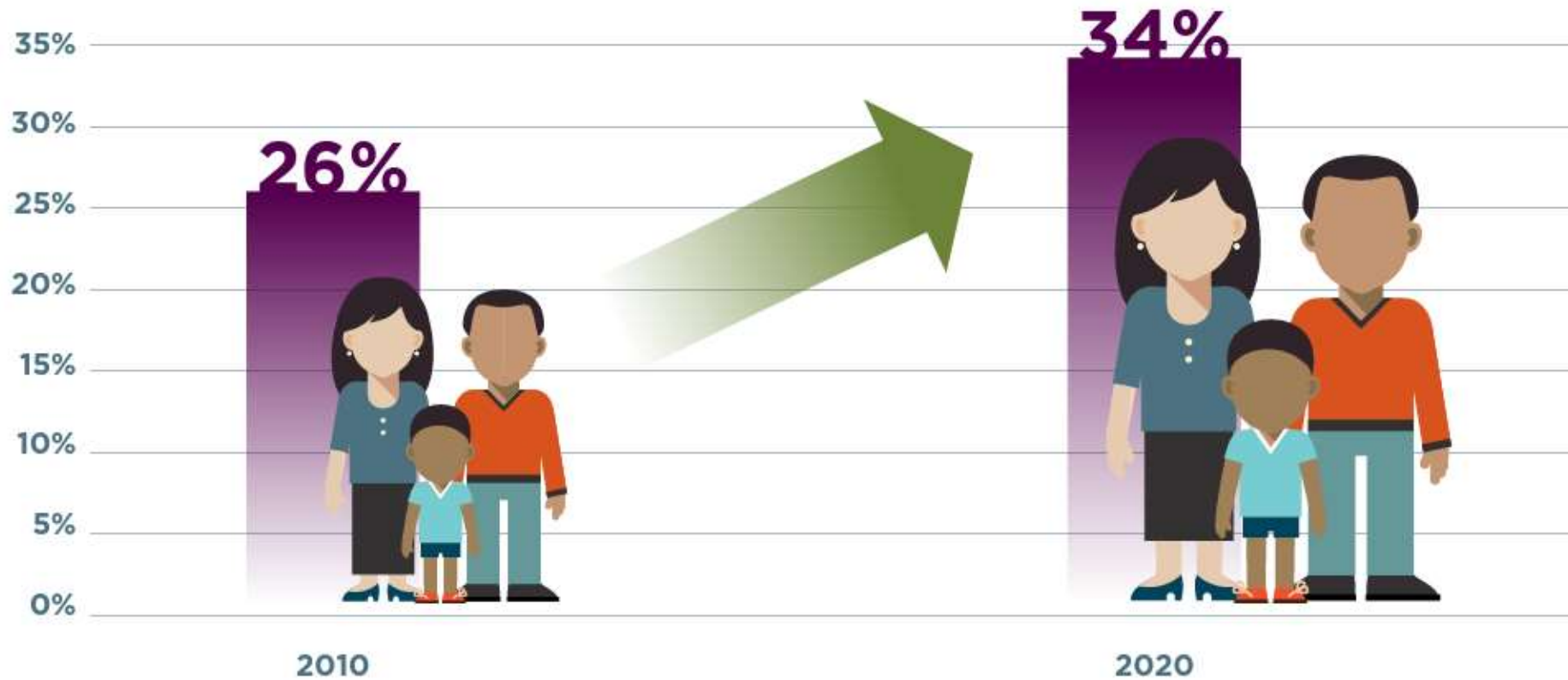
# Children in Grandfamilies in the United States



For every **1 child** being raised by kin in foster care, there are **18 children** being raised by kin outside foster care.



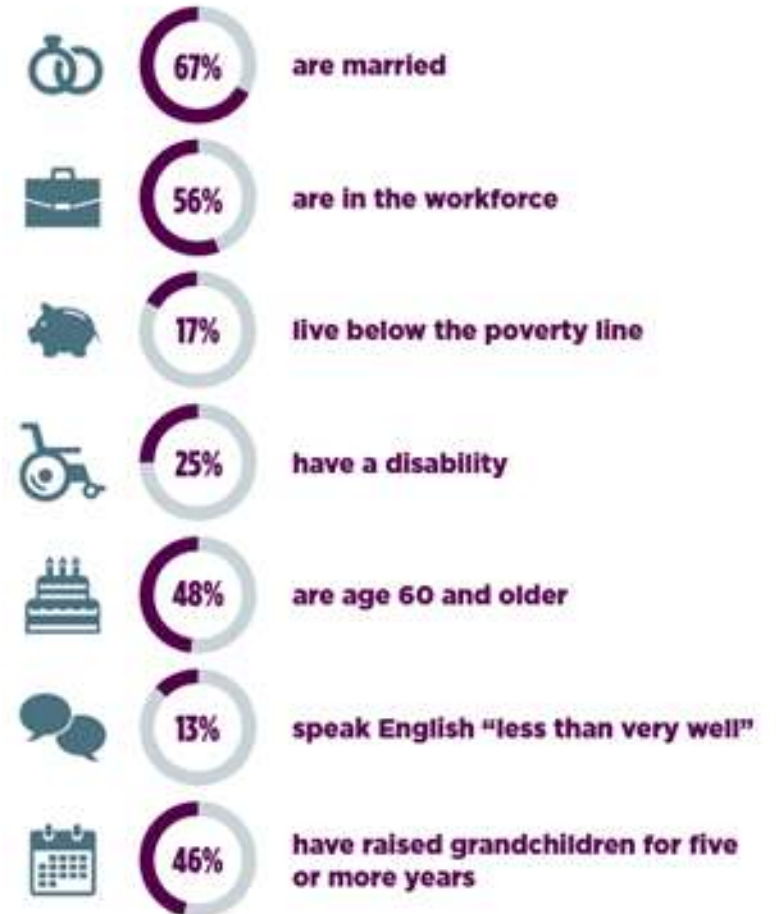
## Percentage of Children in Foster Care Being Raised by Relatives



# Caregivers in Grandfamilies

Very limited data on kin caregivers who are not grandparents

## Grandparents Responsible for Grandchildren



# Grandfamilies Strengths: Children Thrive





**First U.S. Funded  
National  
Technical  
Assistance  
Network on  
Grandfamilies and  
Kinship Families**



# GRANDFAMILIES & KINSHIP SUPPORT NETWORK

A National Technical Assistance Center

- \$10 million for 5 years, awarded as a cooperative agreement in September 2021, overseen by the Administration for Community Living (ACL)
- Generations United has worked on behalf of and with grandfamilies/kinship families since 1997
- Purpose is to provide technical assistance to the array of government agencies – **aging, child welfare, disability, education, housing, Medicaid and Medicare, nutrition, and Temporary Assistance for Needy Families** – and organizations that serve kinship families, including kinship navigator programs
- Not designed to help the families directly – will improve systems for families now and into the future





# National Partners



# Promising Practices



# Legal



Legal issues are frequently among the top concerns for grandfamilies, particularly for those outside the child welfare system:

- **Washington** has a statewide kinship legal aid coordinator, funded with state dollars
- **Illinois** provides help to caregivers in obtaining guardianship outside of child welfare involvement

# Housing



*Grandparent Family Apartments -  
South Bronx, New York*

Grandfamily caregivers often begin caring for children without warning or preparation, and they face unique problems with respect to housing:

- Dedicated grandfamilies housing with services on-site in at least 18 programs around the country
- See <https://www.gu.org/resources/a-place-to-call-home-building-affordable-housing-for-grandfamilies/>



# Finances

Financial challenges are often a major struggle for caregivers who did not plan or expect to raise a child:

- **Massachusetts** grants good cause exemptions for assigning child support to the state to all kinship caregivers applying for Temporary Assistance for Needy Families (TANF) child-only grants
- **Oklahoma** uses state funds to provide emergency assistance while kinship home is being licensed as a foster home



<p><b>ONE CHILD</b></p>	<p><b>Outside the foster care system or in unlicensed kinship foster care:</b></p> <ul style="list-style-type: none"> <li>National average from TANF child-only grants: <b>\$249/month</b></li> <li>Typically must apply separately for Medicaid</li> </ul>	<p><b>Licensed kinship foster care:</b></p> <ul style="list-style-type: none"> <li>National average of minimum foster care maintenance payments: <b>\$511/month</b></li> <li>Automatic Medicaid</li> </ul>	<p><b>Kinship guardianship and adoption assistance:</b></p> <ul style="list-style-type: none"> <li>Up to the foster care rate, based on the minimum payment: <b>\$511/month</b></li> <li>Automatic Medicaid</li> </ul>
<p><b>TWO CHILDREN</b></p>	<p><b>Outside the foster care system or in unlicensed kinship foster care:</b></p> <ul style="list-style-type: none"> <li>National average from TANF child-only grants: <b>\$344/month</b></li> <li>Typically must apply separately for Medicaid</li> </ul>	<p><b>Licensed kinship foster care:</b></p> <ul style="list-style-type: none"> <li>National average of minimum foster care maintenance payments: <b>\$1,022/month</b></li> <li>Automatic Medicaid</li> </ul>	<p><b>Kinship guardianship and adoption assistance:</b></p> <ul style="list-style-type: none"> <li>Up to the foster care rate, based on the minimum payment: <b>\$1,022/month</b></li> <li>Automatic Medicaid</li> </ul>
<p><b>THREE CHILDREN</b></p>	<p><b>Outside the foster care system or in unlicensed kinship foster care:</b></p> <ul style="list-style-type: none"> <li>National average from TANF child-only grants: <b>\$423/month</b></li> <li>Typically must apply separately for Medicaid</li> </ul>	<p><b>Licensed kinship foster care:</b></p> <ul style="list-style-type: none"> <li>National average of minimum foster care maintenance payments: <b>\$1,533/month</b></li> <li>Automatic Medicaid</li> </ul>	<p><b>Kinship guardianship and adoption assistance:</b></p> <ul style="list-style-type: none"> <li>Up to the foster care rate, based on the minimum payment: <b>\$1,533/month</b></li> <li>Automatic Medicaid</li> </ul>

\*National averages are from 2011 GAO report at <https://www.gao.gov/assets/590/585649.pdf>

# Kinship Navigator Programs

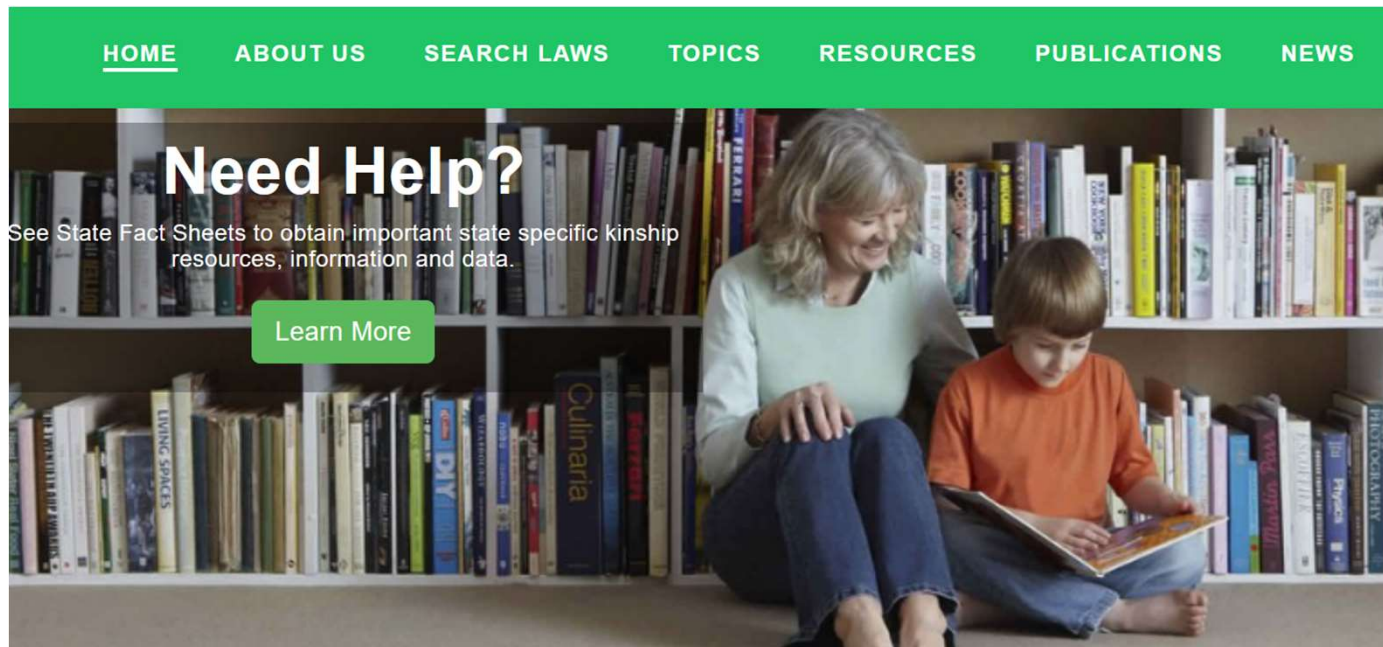
- Programs that link caregivers to services and supports
- A 2018 U.S. law - The Family First Prevention Services Act - authorizes ongoing federal reimbursement of kinship navigator programs
- 2018-2022 funds to states, tribes, and territories to develop, enhance, or evaluate these programs
- **Washington** State runs its kinship navigator program as a collaboration between child welfare and aging and serves all families regardless of child welfare involvement
- A collaborative of four states (**Maine, Montana, Vermont, Wyoming**) is developing a common model and evaluating it – also to serve all kinship families

# Select Resources





# Grandfamilies.org



- A collaboration of the ABA Center on Children and the Law, Generations United, and Casey Family Programs
- Includes State Fact Sheets – in English and Spanish – for all 50 states and the District of Columbia
- Fact Sheets for tribes, Puerto Rico, and the U.S. Virgin Islands are being developed and will be available on the Network’s website

# Additional Assistance



- Responding to individual requests for help from systems, kinship navigators, and community-based nonprofits – email Salah Bottoms at [sbottoms@gu.org](mailto:sbottoms@gu.org)



- Creating new materials – [general fact sheet](#) is latest resource - new website coming in late September – [www.GKSNetwork.org](http://www.GKSNetwork.org)



- Hosting webinar series starting on September 8 with Dr. Terry Cross, NICWA and September 20 with Dr. Joseph Crumbley

# Stay Connected & Access Support

Sign up for our monthly newsletter which will provide you with updates on new Network resources.





# Questions

**Ana Beltran**

Director, Grandfamilies & Kinship Support Network:  
A National Technical Assistance Center

[abeltran@gu.org](mailto:abeltran@gu.org)







The Network is supported by the Administration for Community Living (ACL), U.S. Department of Health and Human Services (HHS) as part of a financial assistance award totaling \$9,950,000 with 95 percentage funded by ACL/HHS and \$523,684 and 5 percentage funded by non-government sources. The contents are those of the authors and do not necessarily represent the official views of, nor an endorsement, by ACL/HHS, or the U.S. Government.

